

*Annual*

*Report*

*July 1 2015 - June 30 2016*

*"Gateway Lights Up the Community"*



# Message from the President & CEO



- *This fiscal year has been both exciting and challenging. Our numbers increased over the past fiscal year from 9,700 families to 11,960 families. We have far exceeded our goals, but at the same time it demonstrates how the needs in our community continue to increase.*
- *The needs are on the rise and Gateway Community Outreach continues to offer assistance needed to stabilize a household by providing food, case management, rent and mortgage assistance, referrals and other ancillary services. GCO hit a milestone in April as we celebrated GCO's 21<sup>st</sup> Anniversary. Along with the accomplishments of serving the community for 21 years, GCO received a Proclamation from the Mayor and Commissioners of Deerfield Beach and in the proclamation it states that the City has proclaimed that June 7<sup>th</sup> is "Gateway Community Outreach Day." Hungry people receive immediate assistance and guidance while overcoming their crisis; problems are identified, and solutions are planned. In our community, we are often the first line of defense, in the war against personal disaster.*
- *Gateway Community Outreach is grateful for the incredible number of dedicated partners, people and companies who provided food, financial support or volunteer hours to those less fortunate in our communities. Our volunteers have been fantastic and we now have over 300 people that are volunteering and dedicated to the cause.*
- *GCO is so thankful for all the foundations, corporations and individuals that have come forward and have partnered with us. I encourage those of you who would like to use your talents and help a worthy cause to please be in touch with us thru our website at [www.gcoflorida.org](http://www.gcoflorida.org) or call us at 954-725-8434. Our work is needed and our work continues. Thank you for making an impact in the lives of friends and neighbors.*

*Carol A Ray*

## Mission of Gateway Community Outreach

Gateway's mission is to safeguard and protect our most vulnerable community members by providing food, housing assistance, referrals and intensive case management to those in need of emergency aid. Our goal is to prevent homelessness and help clients reach self-sufficiency. We offer compassion and hope during times of personal crisis treating those in need with dignity and respect

### Contact us:

Gateway Community Outreach, 291 SE 1st Terrace, Deerfield Beach, FL 33441  
(954) 725-8434 <http://gcoflorida.org/>

June 7, 2016

# Gateway Community Outreach Day



## Proclamation

WHEREAS, Carol Ray, President/CEO founded Gateway Community Outreach (GCO) in April 1995, nearly 20 years ago, and continues to forge ahead in addressing the needs of the community, and

WHEREAS, Gateway Community Outreach is a non-profit 501(c)(3) tax exempt corporation that offers assistance to over 9,700 families and individuals each year with a staff of 4 and over 290 volunteers, and

WHEREAS, Gateway Community Outreach serves the Broward County area, their mission is to safeguard and protect their most vulnerable community members by providing food, housing assistance and intensive case management for those who are in need of emergency aid. For these families, Gateway Community Outreach created a 90 day treatment plan to ensure stability and financial independence; and

WHEREAS, when a family or individual comes to Gateway they are assessed to determine their economic and social service needs. The client is placed on a 90-Day Treatment Plan that provides groceries on a weekly or bi-weekly basis in addition to case management services; and

WHEREAS, the City of Deerfield Beach is excited to commend Gateway Community Outreach on their involvement in the betterment of our community and all of the citizens.

NOW, THEREFORE, I, JEAN M. ROBB, Mayor of the City of Deerfield Beach, Florida, in recognition thereof, do hereby proclaim June 7, 2016 as:

### “Gateway Community Outreach Day”

IN WITNESS WHEREOF, I hereunto set my hand and caused the seal of the City of Deerfield Beach to be affixed at Deerfield Beach, Florida, this 7<sup>th</sup> day of June 2016, A.D.



*Jean M. Robb*  
Jean M. Robb, Mayor

ATTEST:

*Sallyard*  
Sallyard L. Gillyard, CMC, City Clerk

# Doyle Award for Nonprofit Excellence

The Nonprofit Spotlight, established by The Dennis M. and Lois Doyle Family Foundation in partnership with Sun Sentinel Children's Fund, spotlights local nonprofits and the people behind them that make South Florida a great place to live. Gateway Community Outreach was honored with this award in 2015

"This award pays tribute to the many charitable organizations that quietly but effectively serve our community," said Doyle Family Foundation Founder, Denny Doyle. "The Doyle Award wants to recognize these organizations and the people who without fanfare carry out their mission."



*Front row: staff member Denise Chavez, and Board members Carol Ray (President / CEO), Robert Denton; back row: Anne Tanis, Joseph Zappoli, Carol Fernaays, and Jose A. Garces. PHOTO: Sun-Sentinel 8-20-2015.*

# 21<sup>st</sup> Anniversary

*Gateway Community Outreach staff, board members, volunteers, and supporters gathered at the Gateway offices on April 26, 2016 for a 21<sup>st</sup> Anniversary celebration. They reflected on accomplishments. The event was reported in the May 12, 2016 issue of the **Observer** and the June issue of **City News**.*



*Gateway Community Outreach began with Carol Ray, president and CEO, in April 1995. After 21 years, Gateway continues to operate thanks to her dedication. Today, with a small staff of 4 and 296 volunteers, the organization protects vulnerable members of the community by providing food, housing assistance, and referrals for emergency aid.*

# Accomplishments 2015-2016

## Clients

- ❖ 32,281 clients served
- ❖ Heads of household (11,960), children (10,548), other adults (9,773)

## Client Ethnicity

- ❖ Reflects the diversity of South Florida
- ❖ African-American (41%), Caucasian (36%), Hispanic (8%), Haitian (13%), and Other (2%)

## Food

- ❖ Food pantries open six days a week through six satellite locations
- ❖ There is a variety of food offered, changing weekly
- ❖ Clients received nutritional food such as fresh fruit and vegetables, dairy, meat, fish, as well as non-perishables

## 90-Day Plans

- ❖ Case Management services and referral services
- ❖ 47% clients reached stability

## Crisis Aid

- ❖ Emergency rent / mortgage assistance of \$86,626 for 120 clients
- ❖ Gateway provided \$214,445 in food purchases for food distribution locations
- ❖ In-kind donations added \$262,300 for client food distribution

# Program Highlights

*Gateway Community Outreach satellite sites offer services at six locations in Broward and Palm Beach Counties. Volunteers at each site are dedicated to meeting needs in their communities. Active Case Management guides Gateway services which include:*



## *Food Pantry in Pompano Beach*

*"We make each client feel that they are getting something special."*

## Direct assistance

- Intake / Assessment of Need
- Case management
- Client 90-day plans
- Food bags
  - Non-perishable foods
  - Fresh vegetables and fruits
  - Meat and dairy
- Children's summer food boxes
- Baby needs
- Rent / mortgage assistance
- Bus passes
- Gift cards for clothing
- Water bill assistance
- Advising clients and assisting with applications for available local, state, and federal programs

## Referral Services

- Clothing
- Furniture
- Utility Assistance
- Homeless Helpline
- Transportation Assistance (T.O.P.S)

# Program Highlights

## Satellite Food Distribution Sites

*Food Pantry in  
Deerfield Beach*



## A Testimonial – Gateway Changes Lives



“I just want to thank you guys for what you all have done for me and my family. I got your number off of searching endlessly for help because me and my family are in a huge financial struggle and you guys are the only ones to reach back and say come here we will help you.

You gave me money to get a haircut for my new job I start tomorrow and also a Wal-Mart card and 2 public food cards we couldn't be more thankful. Thank you all so much you have no idea what this little you have done how big of an impact it has made. God bless each and every one of you guys.”

Cody C. May 2016



# Senior Services

*The senior population is a main focus at Gateway Community Outreach. We work diligently to provide food, financial assistance for rent or mortgage and water bills. Seniors receive additional referral services such as; help with Supplemental Nutrition Assistance Program (SNAP) and Medicare applications, faxing required documentation to other agencies and advising client about other state/federal benefits.*



Annie W. a senior on Social Security with a fixed income, receives only sixteen dollars a month in food stamps. She looks to Gateway Community Outreach for regular food distribution provided at the Deerfield Beach location. Like other seniors on limited incomes, her need continues beyond the 90 day plan. She has been a client for eleven years.

Ms. W says, "I like the balanced nutritional value of the food. I love the variety, especially the fruits and vegetables."

Because of Gateway Services she is able to remain independent. She says that she likes the care and the hand up. She appreciates the help with food and enjoys the Gateway volunteers.

*My family appreciate the help, I can truly say it was a pleasure meeting the team there at Gateway. I will always be thankful for their help. Clara*



# “Special Touch” Events

*Our “Special Touch” program is designed to bring joy to families, individuals, and children who are in need at specific times of the year.*

## Children’s Box Distribution

The 2015 summer distribution of Children’s Boxes, donated by Children’s Services Council, provided young people with healthy food just for them. Over 100 food boxes with nutritious and fun food for young appetites supplied a delicious lunch option for kids when school was closed.



## “Special Touch” for the Holidays

During the holiday season our “Special Touch” holiday program provided quality ingredients for a complete, healthy, fresh holiday meal for families to cook and enjoy. At Thanksgiving families received meals.

During December 2015, Gateway also provided toys, wrapping paper, gift cards and hygiene products. Gateway Community Outreach made the holiday season a joy-filled time of the year for the 500 families we served.

# Gateway's Community Partners

*Gateway Community Outreach could not offer the level of continued services without support from our community and corporate partners. Gateway connects with over 80 community service agencies to direct clients to appropriate aid and services. Other community partners support Gateway's mission and focus with in-kind support and monetary pledges.*

## Community Partners for 2015-2016

- ❖ Broward First Call for Help - 211
- ❖ Career Source of Broward County
- ❖ Children's Diagnostic & Treatment Center
- ❖ Children Services Council
- ❖ Coalition to End Homelessness
- ❖ Community Presbyterian Church
- ❖ Consolidated Credit Solutions, Inc.
- ❖ Covenant House
- ❖ Deerfield Beach High School
- ❖ Ft. Lauderdale Housing
- ❖ Jewish Family Services
- ❖ Kiwanis of Deerfield Beach
- ❖ Life Net For Families
- ❖ N.E. Focal Point
- ❖ Papa Johns
- ❖ Project Lifeline
- ❖ Publix
- ❖ Soref
- ❖ Starbucks
- ❖ United Way of Broward County (Project Lifeline)
- ❖ Walmart
- ❖ Weatherby Healthcare
- ❖ Whole Food Markets

# Thanks to a Caring Community

*Gateway Community Outreach could not offer the level of continued services without support from our community and corporate partners. Our partners support Gateway's mission and focus through referrals, in-kind support and monetary pledges.*

**THANK YOU!**

## Baby Bottles to “Change a Child”

Staff, students and parents from the Seton Ridge Children's Center in Coral Springs collected spare change totaling \$1,029 in April 2016. The funds are used to purchase diapers and baby food.



## Food Donation from Calvary Chapel

In April 2016, Calvary Chapel donated three pallets of food for Gateway Community Outreach food pantries. Calvary Chapel was the beneficiary of Publix corporate efforts to improve communities.



## Hendrick Honda Pompano Beach

The staff and customers of Hendrick Honda Pompano Beach completed a successful food drive. A car stuffed with food plus a check for \$2,500 were presented on June 28, 2016.

# A Warm Thanks to Our Donors

Gateway Community Outreach recognizes the generous grants and donations from the following organizations. Their assistance contributed to our successes in serving almost 30,900 people in need during 2015 - 2016.

***THANK YOU!***

## 2015-2016 Grantors

- ❖ CFC-Atlantic Coast Combined Federal Campaign
- ❖ Coral Springs Community Chest
- ❖ Edward W. Smith Foundation
- ❖ Enterprise Holdings Foundation
- ❖ Florida Power & Light
- ❖ Jarden Consumer Solutions
- ❖ Lawrence A. Sanders Foundation
- ❖ The Martha G. Moore Foundation
- ❖ Order of St. John of Jerusalem, Knights Hospitaller
- ❖ Publix Supermarket Charities Inc.
- ❖ Schmidt Family Foundation
- ❖ TD Bank Charitable Foundation
- ❖ T.J. Maxx and TJX Foundation
- ❖ The Batchelor Foundation Inc.
- ❖ The Jim Moran Foundation
- ❖ Wal-Mart Foundation
- ❖ William R. Watts Foundation Inc.
- ❖ Zale Foundation ( M.B. & Edna Zale)

## A Huge Thank You to Gateway Volunteers



Volunteers assist in the food warehouse, at pantries, and in the Gateway office. This year, 296 volunteers gave 10,384 hours.



# Gateway Community Outreach Wish List

## Items we need

- ❖ Food drive donations
- ❖ New (to us) computers
- ❖ New sign for main office
- ❖ Pallet jack
- ❖ Refrigeration
- ❖ Van

## Volunteers we need

- ❖ Brochure designer
- ❖ Computer programmer
- ❖ Fundraiser
- ❖ Marketing development
- ❖ Grant writer
- ❖ Main office volunteers
- ❖ Food drive organizers
- ❖ Public relations
- ❖ Sponsors for fundraising and galas
- ❖ Warehouse volunteers

And of course,  
**MONEY!**



# Fundraising and Networking

*Gateway Community Outreach hosted a golf tournament and business and social networking events to bring community awareness to the public.*

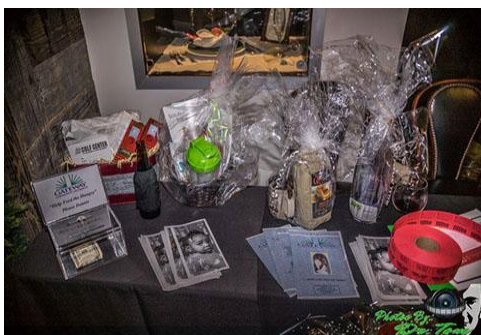
## Golf Tournament & Silent Auction



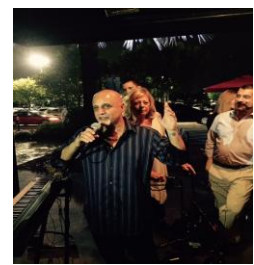
20 for 20 Golf Tournament  
at Heron Bay July 25, 2015



## Business Networking



Business Networking for a Cause at  
Beauty & The Feast July 29, 2015



Pinon Grill Networking for a Cause,  
December 10, 2015. Toy donations for  
Holiday Special Touch

# *Board of Directors 2016*



**President and CEO  
Carol Ray**



**Robert Denton**



**Spencer Ely**



**Carol Fernaays**



**Jose Garces**



**George Mavrookas**



**Anne Tanis**



**Joseph Zappoli**

## **Advisory Board Members**

**Robert Bonham  
Pastor Gary Dolphus  
Deana Thomas**